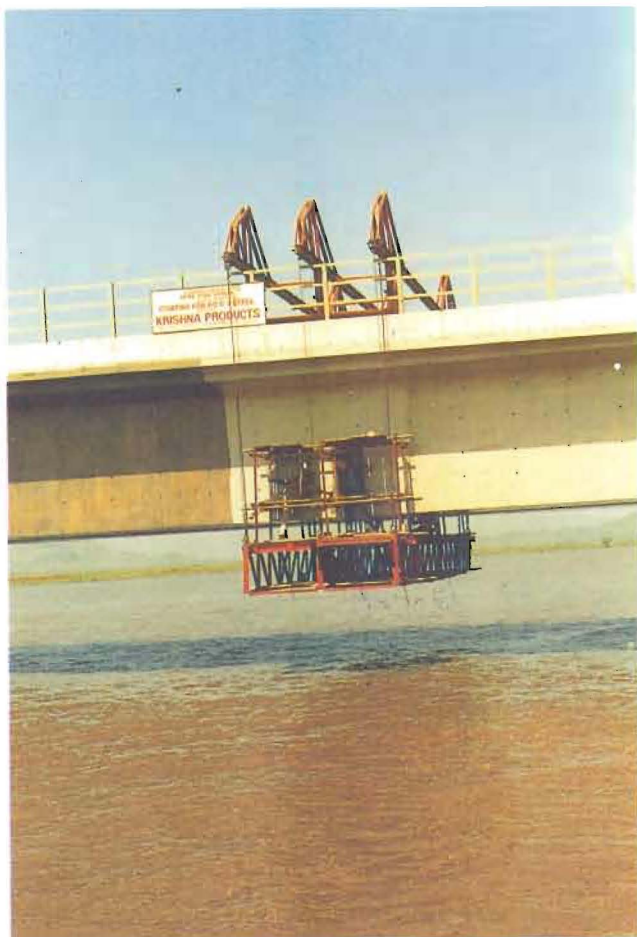




Epoxy-phenolic IPN Coating for Concrete and Steel Structures

Application/Uses	: Protection of concrete and steel structures exposed to aggressive environment e.g. chemical and fertilizer industries and structures in coastal regions
Salient Technical Features	: Resistant to coastal environment. Excellent adhesion to concrete and steel. Durable and easy application. Cost effective.
Environmental Aspects	: Normal measures adopted by the paint industry
Level/Scale of Development	: Commercial scale
Status of Commercialisation	: Licenced to 4 parties. Product is commercially available
Major Components/ Raw Materials	: Epoxy resin base and hardner, prepolymer of cardanol and other additives
Major Plant Equipment and Machinery	: Blender, mixer, reaction kettle, sieving and laboratory equipment
Techno-Economics	: Investment of Rs. 40 - 50 lakh for a plant of capacity 100 ltrs per day
Technology Package	: Process know-how document, demonstration, assistance in production



For further details please contact :

Director

Central Building Research Institute, Roorkee - 247 667 (INDIA)

Phone : +91 1332 72243; Telex : 0597 203 CBRI IN

Fax : +91 1332 72272 & 72543; E. Mail : cbri@sirnetd.ernet.in