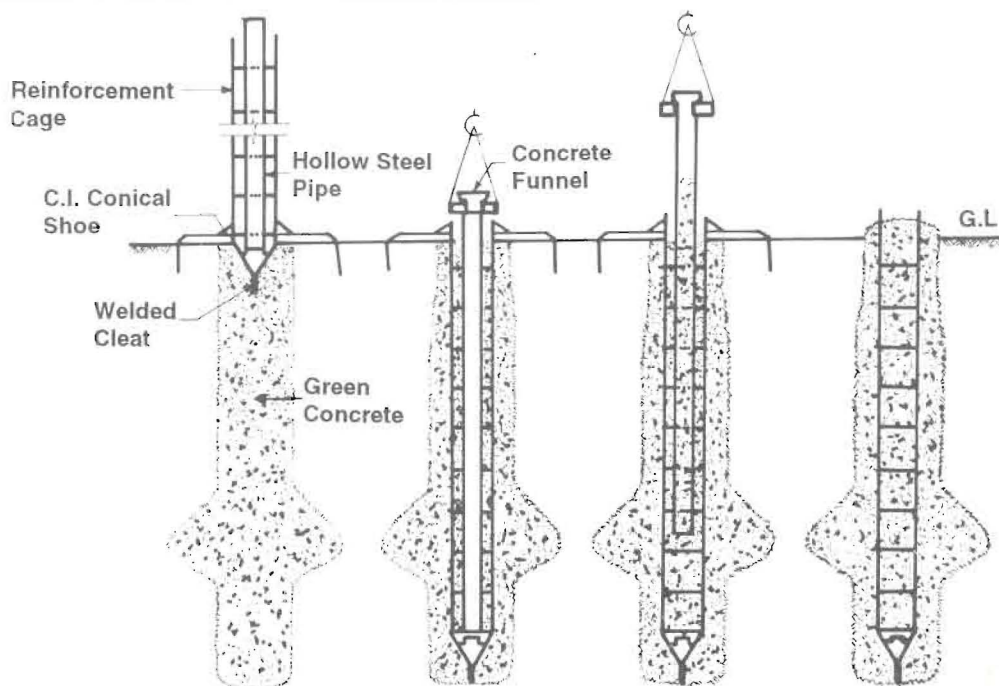




Bored Compaction Pile Foundation



Application/Uses	: Used for foundations of structures of various types such as residential and industrial buildings, overhead tanks, towers, substations, gantry foundations, underground tanks, over bridges etc.
Salient Technical Features	: Combines the advantage of both bored and driven piles by compacting freshly laid concrete and soil around obtaining increased load carrying capacity over normal piles. Suitable for loose to medium silty/sandy soils specially with high water table.
Environmental Aspects	: No adverse effects on the environment
Level/Scale of Development	: Commercial scale
Status of Commercialisation	: 42 licences; technology in production
Raw Materials	: Cement, aggregate and reinforcing steel
Major Plant Equipment and Machinery	: Equipment for boring, Augers, Under reamer, Steel pipes for concreting and driving, Low weight driving equipment
Techno-Economics	: Initial cost of equipment is about Rs. 1 lakh
Technology Package	: Complete design and construction package

For further details please contact : Director
Central Building Research Institute, Roorkee - 247 667 (INDIA)
Phone : +91 1332 72243; Telex : 0597 203 CBRI IN
Fax : +91 1332 72272 & 72543; E. Mail : cbri@sirnetd.ernet.in